



St. Albans Avenue, London, W4
Guide Price £1,350,000

WHITMAN & CO.

SALES · LETTINGS · COMMERCIAL



CONTRACTS EXCHANGED! On the market for the first time in 50 years, we are excited to offer for sale this charming period family home located on this popular residential street on the borders of Bedford Park. The house is arranged over three floors and retains a host of original features with the accommodation comprising a double reception room with a bay window and feature fireplaces and French doors leading to the garden, a fitted kitchen, a dining room which opens onto a lovely south east facing garden, four double bedrooms, family bathroom with separate WC, stripped wood floors and eaves storage. The house has the potential to extend into the side return and over the top-floor back addition subject to the necessary consents. Ideally located in this tree-lined residential road within a short walk of Chiswick High Road's shops, cafes and restaurants. Transport links include Turnham Green and Chiswick Park stations, local bus routes and the A4/M4 for routes in and out of London.



St. Albans Avenue, W4

Approximate Gross Internal Area

146.26 sq m / 1574 sq ft

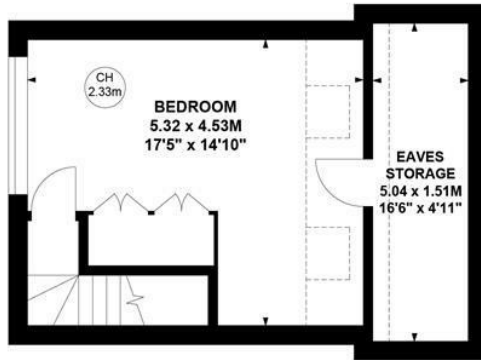
(Including Eaves Storage)

Eaves Storage

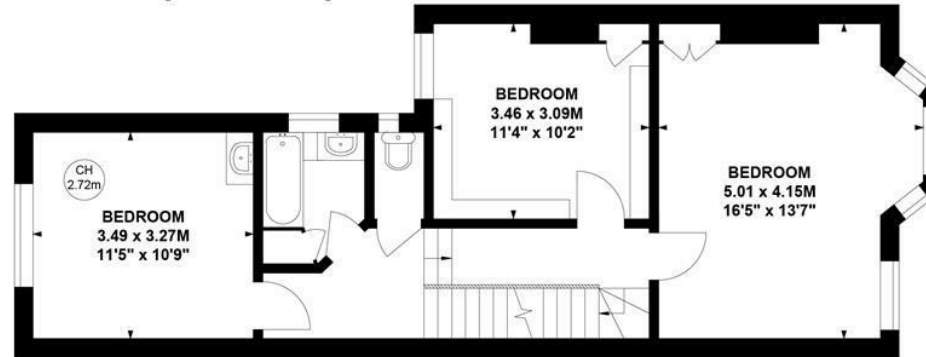
7.61 sq m / 82 sq ft

Key :

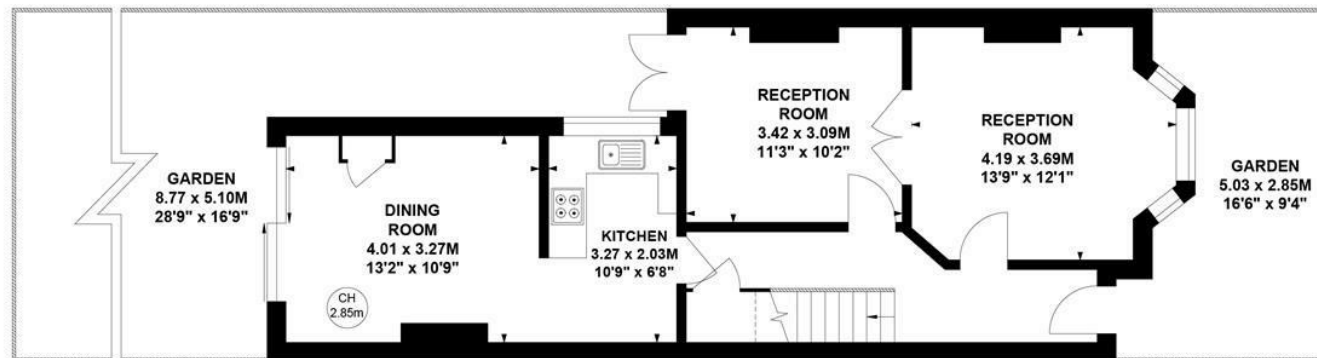
CH - Ceiling Height



Second Floor



First Floor



Ground Floor

Not to scale, for guidance only and must not be relied upon as a statement of fact.

All measurements and areas are approximate only

- CONTRACTS EXCHANGED
- Host of original features
- Private garden

- Four double bedrooms
- Period family home
- Sought after residential street

Tenure - Freehold
Local Authority - Ealing
Council Tax - Band G

